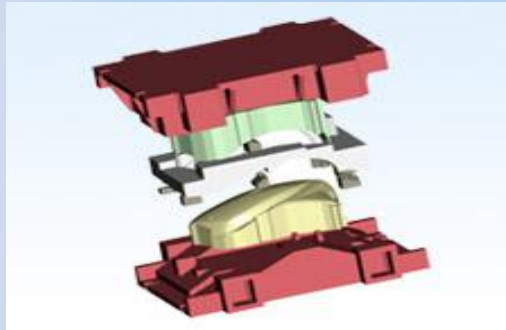




# Profile Overview

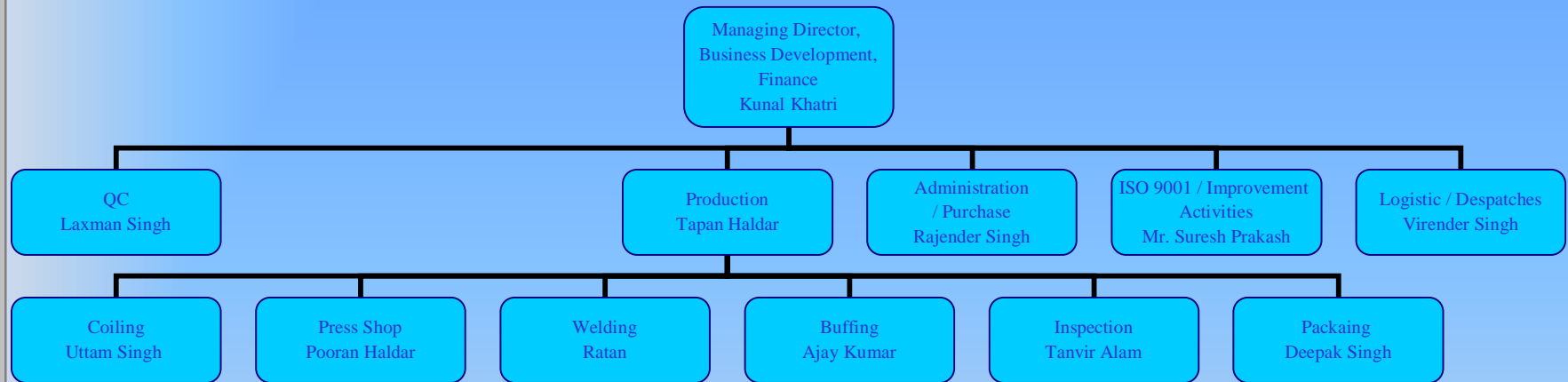


Wintage Group





# Organisation Structure



Wintage Group



## Name

Wintage Engineers &  
Consultants

## Business Profile

Wire Forming, Stamping Facility,  
Consultancy / Export Trading  
Arm of Group Companies\*

\* All the export sales of our group companies are being done by Wintage Engineers & Consultants



# Quality Certification



Wintage Group



Cert 4U Iss 0408



## Certificate of Registration

This certificate has been awarded to

**Wintage Engineers & Consultants**  
Plot No. 40 A/13, Site-IV, Industrial Area, Sahibabad, Ghaziabad, U.P., 201  
010, India

in recognition of the organization's Quality System which  
complies with

**ISO 9001:2008**

The scope of activities covered by this certificate is defined below

**Manufacture of Automotive & Engineering Metal  
Components**

Certificate Number:	34500/A/0001/UK/En	
Date of Issue:	09 April 2009	
(Original Certificate)		
Date of Issue:	09 April 2009	Issue No: 1
Expiry Date:	08 April 2012	
Issued by:		

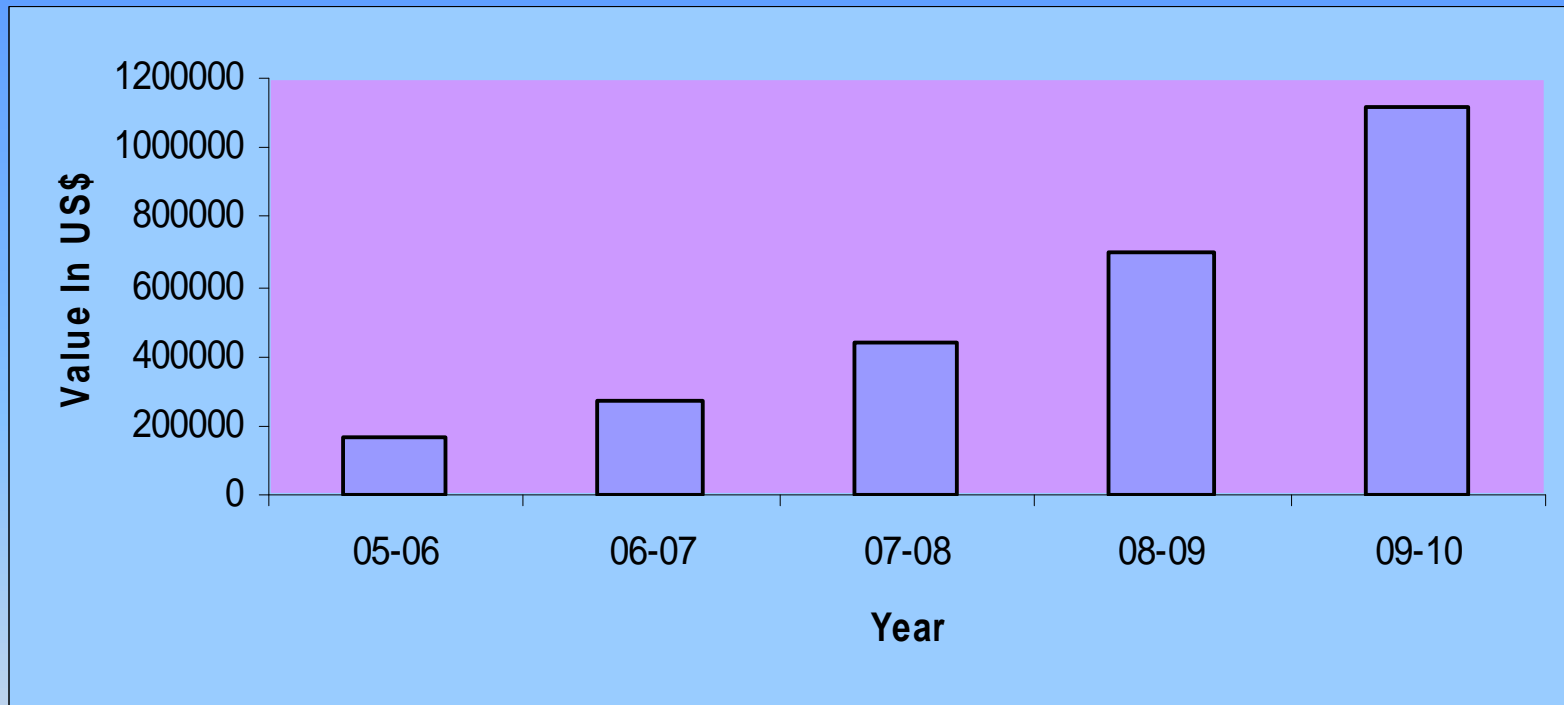
On behalf of the  
Schemes Manager

If there is any doubt as to the authenticity of this certificate,  
please do not hesitate to contact the Head Office of the Group or info@ros-pro.com  
urs is a member of Registrar & Consultants (Holdings) Limited a UK registered company, Cheddar, Somerset





# Our Sales Growth

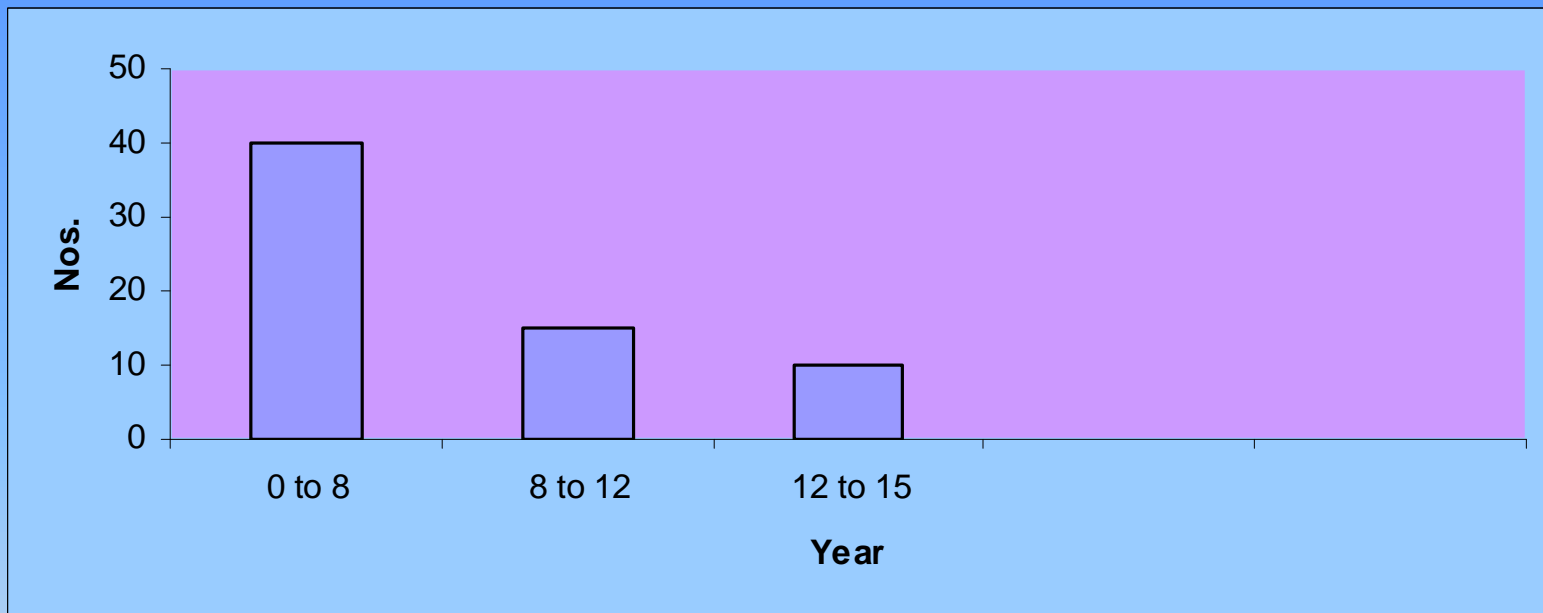


Wintage Group

Precision is our profession, Quality the result



# Man Power Strength





- Incorporated in 2005.
- Possess a wealth of metal stamping, Wire Forming experience
- State-of-the-art metal stamping system, Wire Forming and the most suitable machine tools
- Highly skilled, dedicated, experienced work force
- Die design, Die manufacturing, and Precision stamping processes

Precision is our profession, Quality the result





## Vision.

- To become a leading global supplier of Precision metal stampings & Wire Forming.
- To be recognized as one of the best places to work and most respected companies.

## Philosophy

- Customer Focused
- Employee driven
- Data based and
- Teamwork and Innovation.

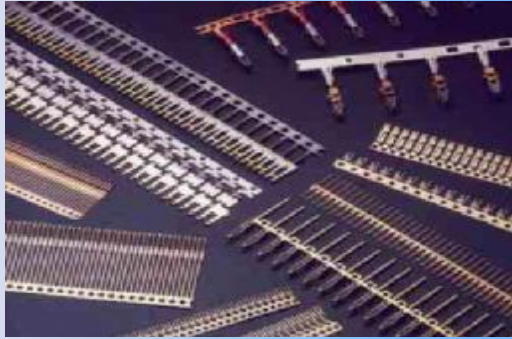




# Product Capabilities



Wintage Group



Stampings for Automotive, Laminations, Electronic, Telecommunication and Computer applications.



Precision complex metal stamping, sub-assemblies, mechanisms and systems.



Fine-blanked components for Automotive, Household appliances, Electrical, Watch and Clock, Measuring equipment etc



## Cost-effective precision services



- Specialized in-house capability from Engineering design to Tooling and Metal Stamping.
- Small to large, simple to complex, and quantities ranging from one to millions.
- Reengineering of an existing stamped part.
- We create subassemblies from our stampings and parts from your other suppliers
- Validation : testing to the extremes of every material, component, subassembly with utmost speed and precision.

Wintage Group

Engineering experience and expertise to deliver every time all the time.



- Product Design and Development
- Tool Design & Manufacturing
- Stamping Technologies
- Manufacturing Engineering
- Testing & Validation
- Cost Competitiveness
- Productivity enhancement tools

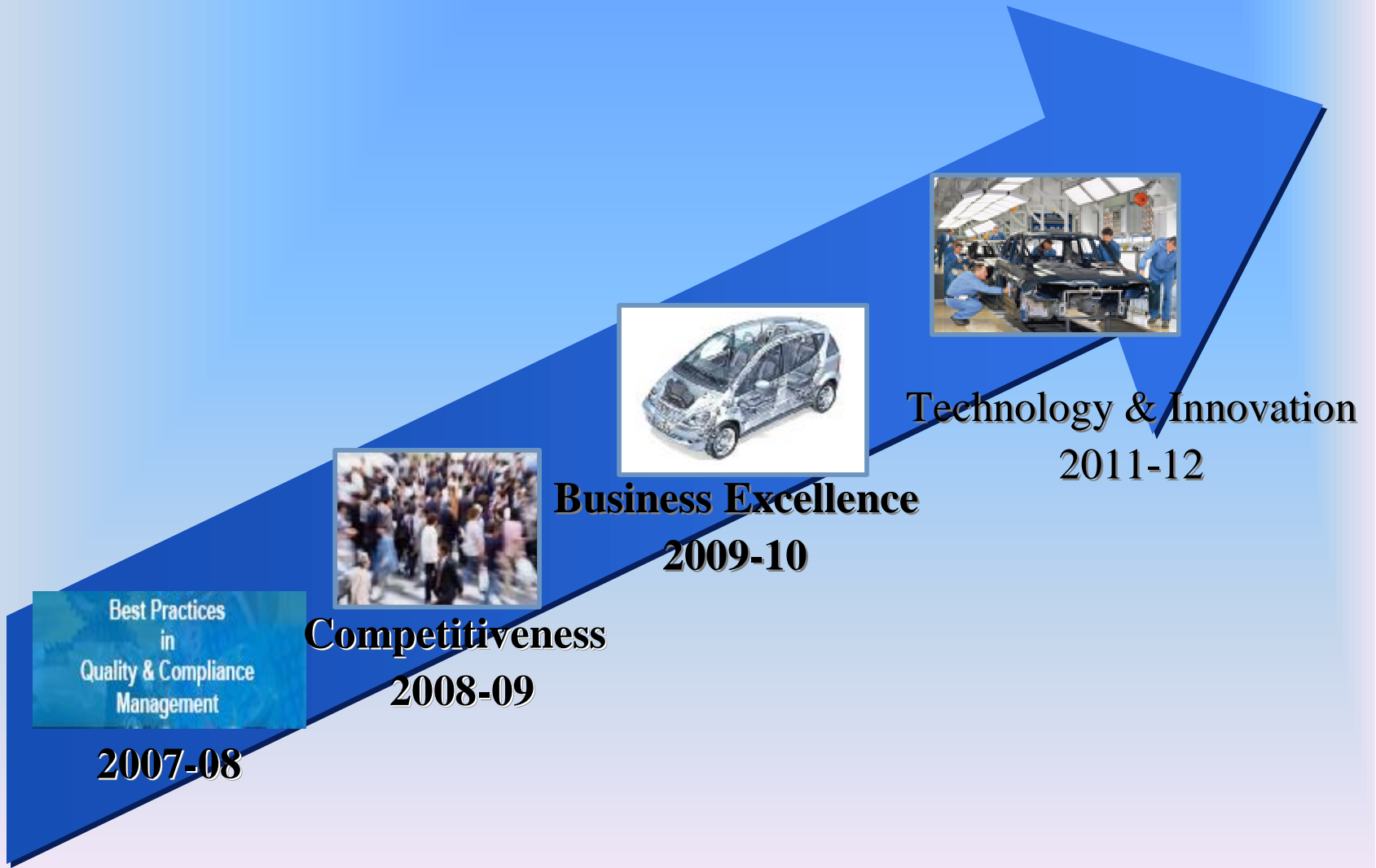
Enhancing our customers business



# Strategy For Growth



Wintage Group





# Our Resources



üConventional, High Speed and Fine blanking  
( 10 Tons to 100 Tons, 40 SPM to 400 SPM )

üEngineering Design Services



**Design Center**



**Press Shop**

## In-house Facilities



**Tool Room**

üTool Maintenance



**Metrology Lab  
(2009-10)**

üMeasurements, Calibration and Validation

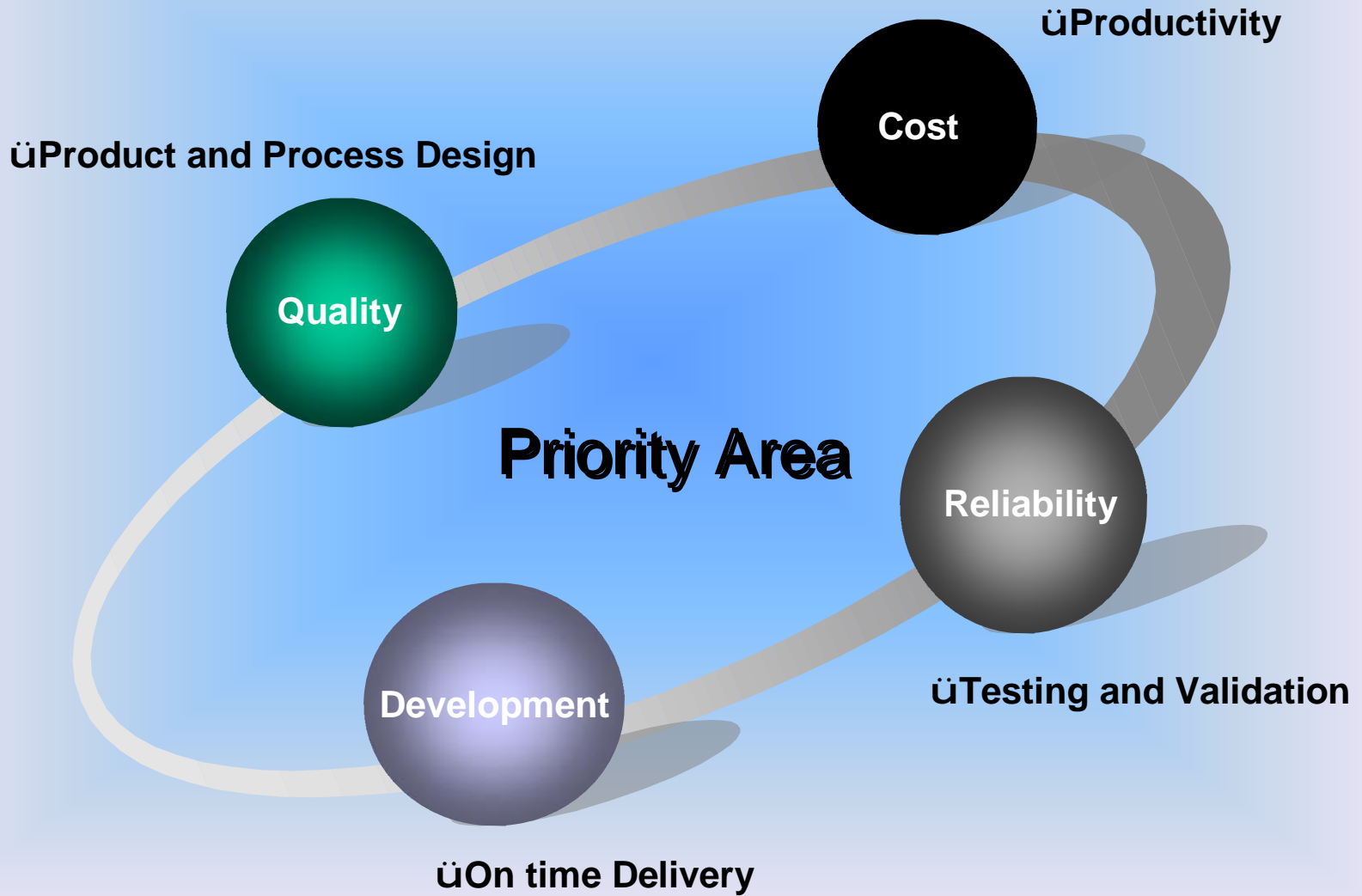
Wintage Group



# Our Strength



Wintage Group





## **WINTAGE EMPLOYEE CHARTER**

Clever Tech is committed to an operating philosophy which is based on fairness and concern for people. This philosophy is part of Clever Tech's fair enterprise culture in which employees and management share in the responsibility to ensure the success of the company.

### **JOB SECURITY**

Being competitive by making a better product for a better price is the best way to enhance job security. Clever Tech is committed to working together with employees to help protect their job security.

### **A SAFE AND HEALTHFUL WORKPLACE**

Clever Tech strives to provide employees with a working environment which is safe and healthful

### **FAIR TREATMENT**

Clever Tech offers equal opportunities based on an individual's qualification and performance free from discrimination or favoritism

### **COMPETITIVE WAGES AND BENEFITS**

If your total compensation is found not to be competitive, then your wages will be adjusted.

### **EMPLOYEE PROFIT PARTICIPATION**

Clever Tech believes that every employee should share in the financial success of the company

### **COMMUNICATION AND INFORMATION**

Through regular meetings and publications Clever Tech will provide employees with information so that they will know what is going on in their company and within the industry.





Serving with Pride



Looking for improvement in your stamping products ?  
Try Wintage Group.  
Experience the difference ...speed, quality and value.

Wintage Group

Committed to build a winning brand  
..trust and assurance for customers.

Let's get on track, building together for the future market



# Fine Blanked Components ..



Wintage Group





# Assemblies ...



Wintage Group





# High Speed Precise Stamping ...



Wintage Group





# Mixed Product Range ...



Wintage Group

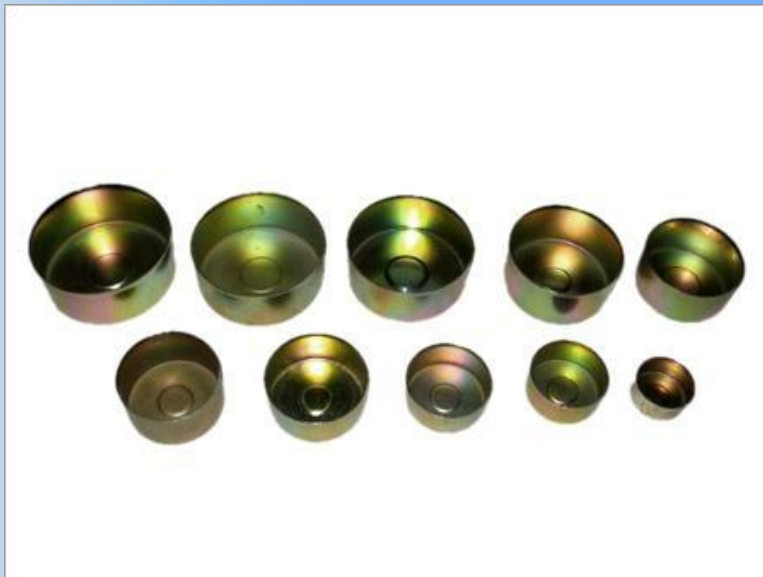




# Deep Drawn Parts ...



Wintage Group





# Mixed Product Range ...



Wintage Group







# Mixed Product Range ...



Wintage Group



# Our Customers



Wintage Group

OEM	Customer	Product
<b>Domestic</b>		
	Century	Automotive/Two Wheeler
	Sevton	Industrial
	JNS Instruments	Automotive/Four Wheeler
	Jay Ushin	Automotive/Two Wheeler
	Joezer Systems	Automotive/Three Wheeler
	ASK Automotive	Automotive/Two wheeler
	Minda Valeo	Automotive/Two wheeler
<b>Overseas</b>		
	CKD Pack Canada & Australia	Automotive Packaging
	Accessory Arcade	Industrial Components
	Lincoln USA	Industrial Components



# Equipments



Wintage Group

Process / Dept	Equipment	Make
Design	CAD Station – 3 Nos.	Auto-Cad, Solid-works, Pro-E, UG
Tool Room	Tool Room Lathe -Pilot 170	PMW - Gujarat
	Surface Grinder -V5	Brown and Sharpe -USA
	Surface Grinder	Ramana
	Milling Machine -M2V	Oerli Italianakon -Italy
	Cylindrical Grinder	under process
Production	Hydraulic Press (6T)	Local
	High Speed Press (10 Tons, 400 SPM )	ESSA - Switzerland
	Mechanical Power Press (20 Tons)	Lakshmi Udyog
	Mechanical Power Press (30 Tons)	Lakshmi Udyog
	High Speed Press ( 63 Tons, 200 SPM )	Ameteeep M/C Tools
	Power Press ( 100 Tons )	Ameteeep M/C Tools
	MIG Welding Machine (2 Nos.)	ESAB
Multispindle Tapping Machine	Machless	
Quality Assurance (By 2008-09)	Profile Projector	opticom vl 360
	Video Measuring System	opticom model 250
	Stereo Microscope with measuring Software	mias
	Metallurgical Microscope with Image Analyser	mias version 20
	Hardness Tester	phynix Germany
Utility	Generator 50 KVA	Kirloskar Cummins
	Compressor 125 CFM	Atlas Copco
	Electrical Panel	Shivam Instruments



# Wintage Engineers & Consultants

India's biggest Stainless Steel Turbo Charger Hoses  
Reinforcement Rings Manufacturer

Wintage Group



# Rings For Hoses ....



Wintage Group



# Equipments



Wintage Group

Description	Capacity	Nos.
Power Press	20 Ton	1
Tig Welding	400 Amp	2
Tig Welding	200 Amp	2
Sizing Machine	10 Ton	3
Lathe Machine		1
Surface Grinder		1
Drilling Machine		1
Buffing Machines		5
Other Measuring Equipments		



# Our Customers



Wintage Group



SANITARYWARE | BATH FITTINGS | KITCHEN SINKS  
SHOWER TEMPLES | WHIRLPOOL







Contact Us...



# Wintage Engineers & Consultants

1591, DDA Flats , GTB Enclave,  
Delhi – 110 093, India

Plant:

Plot No. 40A/13, Site – IV, Industrial Area, Sahibabad,  
Ghaziabad, UP-201010, India

Telephone : +91 120 4563943, Fax : +91 120  
4563944

Email : [info@wintageengineers.com](mailto:info@wintageengineers.com)

Wintage Group



Way Forward...



Thank You.

Wintage Group

